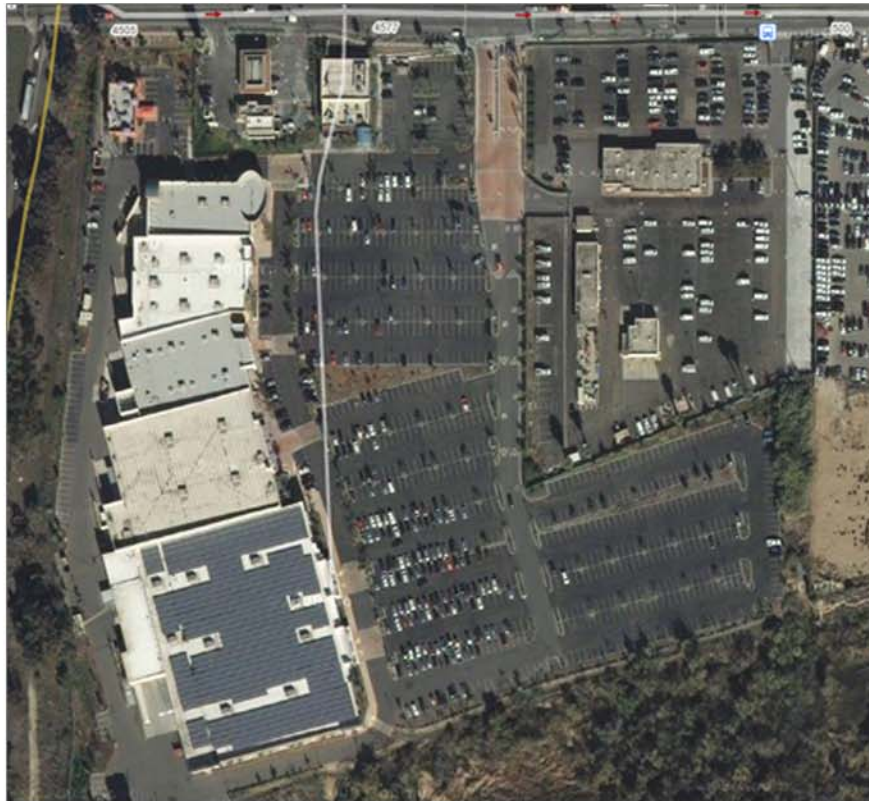
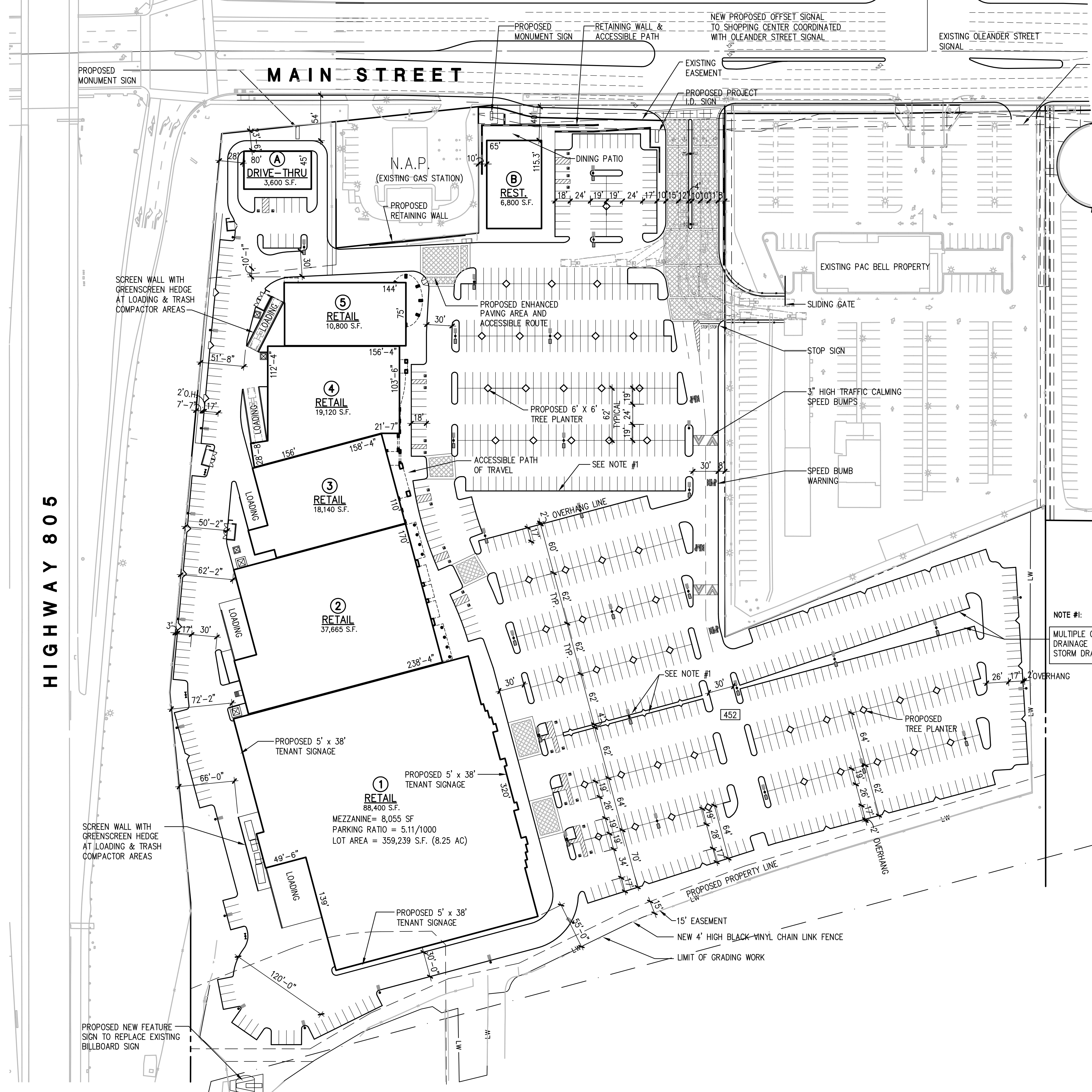


Chula Vista Crossings Shopping Center, Chula Vista, CA

Chula Vista Crossings is new 185,000 square foot shopping center located along Interstate 805 at Main Street in Chula Vista, CA. This exciting power center is highly visible from the 805 freeway and draws customers from the entire south bay of San Diego. Chula Vista Crossings is anchored by Kohl's, Babies R'Us, Staples, PetSmart, Pier 1 Imports, Souplantation, and Panda Express.

1810-1870 Main Court, Chula Vista, California 91911





SITE RESUME	
TOTAL SITE AREA (GROSS)	±17.20 AC
BUILDING AREA	
RETAIL 1 - GROUND FLOOR	88,400 S.F.
RETAIL 1 - MEZZANINE	8,055 S.F.
RETAIL 2	37,665 S.F.
RETAIL 3	18,140 S.F.
RETAIL 4	19,120 S.F.
RETAIL 5	10,800 S.F.
DRIVE-THRU A	3,600 S.F.
RESTAURANT B	6,800 S.F.
GROSS BUILDING AREA (INCLUDING MEZZANINE)	192,580 S.F.
GROUND FLOOR BUILDING AREA	184,525 S.F.
PARKING PROVIDED	
FULL SIZE (9' x 19')	986 CARS
ACCESSIBLE	25 CARS
TOTAL NUMBER OF SPACES PROVIDED	1011 CARS
GROSS AREA PARKING RATIO	5.25 CARS / 1,000 S.F.
GROUND FLOOR PARKING RATIO	5.47 CARS / 1,000 S.F.

NOTE #1:
MULTIPLE CURB INLETS FOR DRAINAGE THRU PLANTER TO STORM DRAIN ACCORDING TO B.M.P.

THIS SITE PLAN IS NOT A REPRESENTATION, WARRANTY OF GUARANTEE AS TO SIZE, LOCATION OR IDENTITY OF ANY TENANT, AND THE BUILDINGS, IMPROVEMENTS, PARKING, INGRESS, AND EGRESS ARE SUBJECT TO SUCH CHANGES, ADDITIONS AND DELETIONS AS THE ARCHITECT, LANDLORD OR ANY GOVERNMENTAL AGENCY MAY DIRECT. ANY SPECIFIC TENANT REFERENCED HEREIN IS SUBJECT TO CHANGE, DELETION, CHANGE OF LOCATION, ETC., AT ANY TIME WITHOUT PRIOR NOTICE.

NOTE: BUILDING SQ. FT. ARE APPROXIMATE AND DEPEND ON FINAL TENANT.

SITE PLAN

1"=60'-0"

NORTH

REVISIONS

SCALE 1"=60'-0"

